

Planxty George Brabazon

Score

Musical score for Trombone 1 through 4. The score is in 4/4 time with a key signature of one flat (B-flat). Trombone 1 is mostly silent, with a final melodic phrase in the last measure marked *mf*. Trombone 2 plays a melodic line starting with *mf*. Trombone 3 plays a sustained note with accents, marked *mp*. Trombone 4 plays a sustained note with accents, marked *mp*.

A

Musical score for Trombone 1 through 4, labeled 'A'. Trombone 1 plays a melodic line. Trombone 2 plays a sustained note with accents, marked *mp*. Trombone 3 plays a sustained note with accents, marked *mp*. Trombone 4 plays a sustained note with accents, marked *mp*.

Planxty George Brabazon

2

B

Tbn. 1

Musical notation for Tbn. 1 in section B. The staff is in bass clef with a key signature of one flat. It features a series of whole notes: G2, F2, E2, D2, C2, B1, A1, G1. The final measure contains three eighth notes: G1, F1, E1, each with an accent (>).

p

Tbn. 2

Musical notation for Tbn. 2 in section B. The staff is in bass clef with a key signature of one flat. It features a series of half notes: G2, F2, E2, D2, C2, B1, A1, G1. The final measure contains two eighth notes: G1, F1, each with an accent (>).

p

Tbn. 3

Musical notation for Tbn. 3 in section B. The staff is in bass clef with a key signature of one flat. It features a series of eighth notes: G2, F2, E2, D2, C2, B1, A1, G1. The final measure contains three eighth notes: G1, F1, E1, each with an accent (>).

Tbn. 4

Musical notation for Tbn. 4 in section B. The staff is in bass clef with a key signature of one flat. It features a series of whole rests. The final measure contains two eighth notes: G1, F1.

mf

C

Tbn. 1

Musical notation for Tbn. 1 in section C. The staff is in bass clef with a key signature of one flat. It features a series of quarter notes: G2, F2, E2, D2, C2, B1, A1, G1. The final measure contains three eighth notes: G1, F1, E1, each with an accent (>).

mf

Tbn. 2

Musical notation for Tbn. 2 in section C. The staff is in bass clef with a key signature of one flat. It features a series of quarter notes: G2, F2, E2, D2, C2, B1, A1, G1. The final measure contains two eighth notes: G1, F1, each with an accent (>).

f

Tbn. 3

Musical notation for Tbn. 3 in section C. The staff is in bass clef with a key signature of one flat. It features a series of quarter notes: G2, F2, E2, D2, C2, B1, A1, G1. The final measure contains three eighth notes: G1, F1, E1, each with an accent (>).

f

Tbn. 4

Musical notation for Tbn. 4 in section C. The staff is in bass clef with a key signature of one flat. It features a series of eighth notes: G2, F2, E2, D2, C2, B1, A1, G1. The final measure contains three eighth notes: G1, F1, E1, each with an accent (>).

mf

D

Musical score for section D, featuring four tuba parts (Tbn. 1-4) in bass clef with a key signature of one flat. The score includes dynamic markings such as *f* and accents.

E

Musical score for section E, featuring four tuba parts (Tbn. 1-4) in bass clef with a key signature of one flat. The score includes dynamic markings such as *mf* and accents.

Planxty George Brabazon

4

F

Tbn. 1

Tbn. 2

Tbn. 3

Tbn. 4

mf

f

G

Tbn. 1

Tbn. 2

Tbn. 3

Tbn. 4

f

Planxty George Brabazon

Musical staff with bass clef and 4/4 time signature. The staff contains a series of eighth notes with accents. The dynamic marking *mp* is placed below the first note.

A

Musical staff with bass clef. The staff contains a series of eighth notes with accents. The dynamic marking *mp* is placed below the first note.

B

C

Musical staff with bass clef. It begins with a measure rest of 7 measures. The staff then contains a series of eighth notes with accents. The dynamic marking *mf* is placed below the first note.

28

Musical staff with bass clef. The staff contains a series of eighth notes with accents. The dynamic marking *mf* is placed below the first note.

D

Musical staff with bass clef. The staff contains a series of eighth notes with accents. The dynamic marking *f* is placed below the first note.

37

Musical staff with bass clef. The staff contains a series of eighth notes with accents. The dynamic marking *f* is placed below the first note.

E

Musical staff with bass clef. The staff contains a series of eighth notes with accents. The dynamic marking *f* is placed below the first note.

45

Musical staff with bass clef. The staff contains a series of eighth notes with accents. The dynamic marking *f* is placed below the first note.

F

Musical notation for section F, measures 1-4. Bass clef, key signature of one flat. Dynamics: *mf*.

53

Musical notation for section F, measures 5-8. Bass clef, key signature of one flat. Accents on measures 7 and 8.

G

Musical notation for section G, measures 1-4. Bass clef, key signature of one flat. Dynamics: *f*.

61

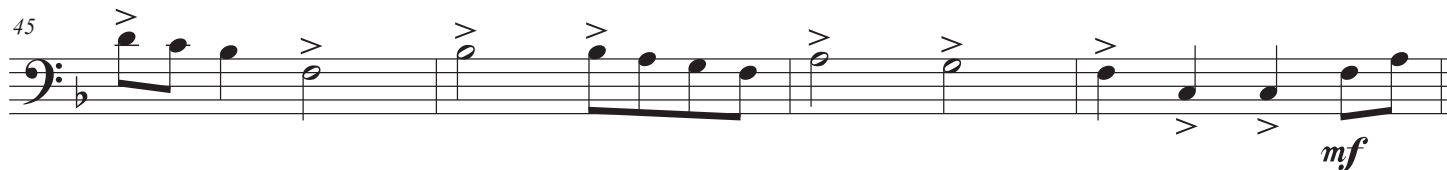
Musical notation for section G, measures 5-8. Bass clef, key signature of one flat. Accents on measures 7 and 8.

Planxty George Brabazon

²
E



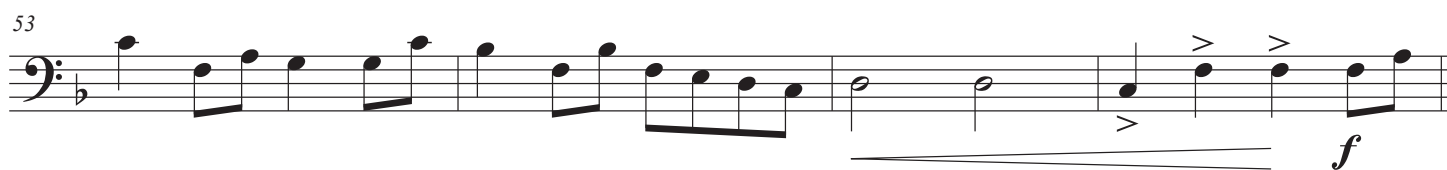
45



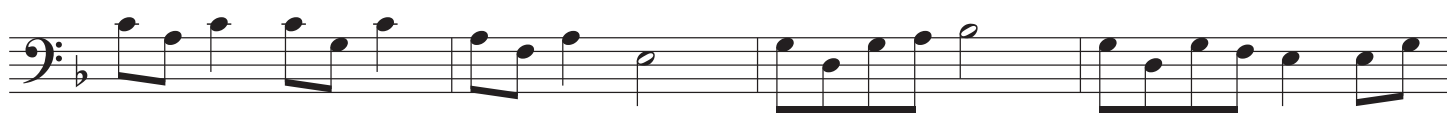
F



53



G



61



Planxty George Brabazon

mf

5

A

mp

B

p

C

mf

29

f

D

37

Planxty George Brabazon

2
E

First staff of music for section E, measures 1-4. Bass clef, key signature of one flat (B-flat). The melody consists of eighth notes with accents and slurs.

Second staff of music for section E, measures 5-8. Bass clef, key signature of one flat. The melody continues with eighth notes and accents. The dynamic marking *mf* is present at the end of the staff.

F

First staff of music for section F, measures 9-12. Bass clef, key signature of one flat. The melody consists of eighth notes with accents and slurs.

Second staff of music for section F, measures 13-16. Bass clef, key signature of one flat. The melody continues with eighth notes and accents. The dynamic marking *f* is present at the end of the staff.

G

First staff of music for section G, measures 17-20. Bass clef, key signature of one flat. The melody consists of eighth notes with accents and slurs.

Second staff of music for section G, measures 21-24. Bass clef, key signature of one flat. The melody continues with eighth notes and accents. The dynamic marking *f* is present at the end of the staff.

Planxty George Brabazon

Turlough O'Carolan

David Wilken

Musical staff in bass clef, 4/4 time signature. It begins with a 7-measure rest indicated by a horizontal line with the number '7' above it. The staff concludes with two eighth notes, G2 and F2, marked with a dynamic of *mf*.

A

Musical staff in bass clef, 4/4 time signature. It contains a continuous eighth-note melody starting on G2 and moving stepwise up to G3.

Musical staff in bass clef, 4/4 time signature. It continues the eighth-note melody from the previous staff. The final three notes (G3, F3, E3) are marked with accents (>).

B

Musical staff in bass clef, 4/4 time signature. It contains a half-note melody starting on G2 and moving stepwise up to G3. The final three notes (G3, F3, E3) are marked with accents (>). The dynamic marking is *p*.

C

Musical staff in bass clef, 4/4 time signature. It contains dotted quarter notes starting on G2 and moving stepwise up to G3. The dynamic marking is *mf*.

Musical staff in bass clef, 4/4 time signature. It continues the dotted quarter note melody from the previous staff. The final three notes (G3, F3, E3) are marked with accents (>). The dynamic marking is *f*.

D

Musical staff in bass clef, 4/4 time signature. It contains a continuous eighth-note melody starting on G2 and moving stepwise up to G3.

Musical staff in bass clef, 4/4 time signature. It continues the eighth-note melody from the previous staff. The final three notes (G3, F3, E3) are marked with accents (>).

Planxty George Brabazon

2
E

Musical staff for section E, measures 1-4. The staff is in bass clef with a key signature of one flat (B-flat). It contains four measures of music. Each measure begins with a dotted quarter note followed by an eighth note. The notes are: G2, F2, E2, D2 in the first measure; G2, F2, E2, D2 in the second measure; G2, F2, E2, D2 in the third measure; and G2, F2, E2, D2 in the fourth measure. Each note has an accent (>) above it.

Musical staff for section E, measures 5-8. The staff is in bass clef with a key signature of one flat. It contains four measures of music. Each measure begins with a dotted quarter note followed by an eighth note. The notes are: G2, F2, E2, D2 in the first measure; G2, F2, E2, D2 in the second measure; G2, F2, E2, D2 in the third measure; and G2, F2, E2, D2 in the fourth measure. Each note has an accent (>) above it.

mf

F

Musical staff for section F, measures 9-12. The staff is in bass clef with a key signature of one flat. It contains four measures of music. Each measure begins with a dotted quarter note followed by an eighth note. The notes are: G2, F2, E2, D2 in the first measure; G2, F2, E2, D2 in the second measure; G2, F2, E2, D2 in the third measure; and G2, F2, E2, D2 in the fourth measure. Each note has an accent (>) above it.

Musical staff for section F, measures 13-16. The staff is in bass clef with a key signature of one flat. It contains four measures of music. Each measure begins with a dotted quarter note followed by an eighth note. The notes are: G2, F2, E2, D2 in the first measure; G2, F2, E2, D2 in the second measure; G2, F2, E2, D2 in the third measure; and G2, F2, E2, D2 in the fourth measure. Each note has an accent (>) above it.

f

G

Musical staff for section G, measures 17-20. The staff is in bass clef with a key signature of one flat. It contains four measures of music. Each measure begins with a dotted quarter note followed by an eighth note. The notes are: G2, F2, E2, D2 in the first measure; G2, F2, E2, D2 in the second measure; G2, F2, E2, D2 in the third measure; and G2, F2, E2, D2 in the fourth measure. Each note has an accent (>) above it.

Musical staff for section G, measures 21-24. The staff is in bass clef with a key signature of one flat. It contains four measures of music. Each measure begins with a dotted quarter note followed by an eighth note. The notes are: G2, F2, E2, D2 in the first measure; G2, F2, E2, D2 in the second measure; G2, F2, E2, D2 in the third measure; and G2, F2, E2, D2 in the fourth measure. Each note has an accent (>) above it.